



OVER-BRACED PROFILE JIB CRANES

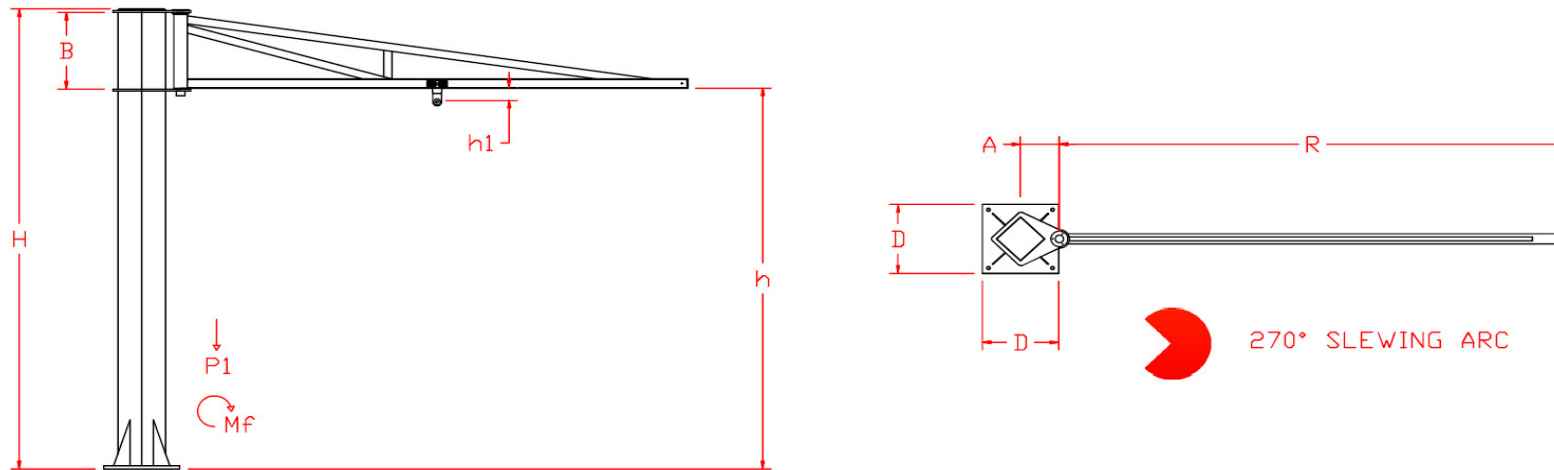
FREESTANDING DIMENSIONS

T. +44 (0) 1926 813111

F. +44 (0) 1926 81559

E. sales@niko.co.uk

W. www.niko.co.uk



SWL (kg)	Arm Dimensions				Freestanding Pillar Dimensions				Loadings and Weights			
	Radius R (mm)	Niko Track Profile	Kingpin Height B (mm)	Trolley Depth h1 (mm)	Overall Height H (mm)	Height to Under Arm h (mm)	Pivot Point A (mm) *	Base Size D (mm) *	Overturning Moment Mf (kg.m) *	Downward Force P1 (kg) *	Arm Weight (kg)	Column weight (kg)
80	3	24.000	500	57	3000	2500	230	450	438	325	42	158
	4	24.000	500	57	3000	2500	230	450	617	341	58	158
	5	24.000	600	57	3000	2400	230	450	804	354	71	158
	6	25.000	600	67	3000	2400	260	600	1036	474	95	254
125	3	25.000	500	67	3000	2500	230	450	618	389	49	158
	4	25.000	500	67	3000	2500	230	450	845	399	60	158
	5	25.000	600	67	3000	2400	230	600	1122	452	86	184
	6	25.000	750	67	3000	2250	260	600	1383	534	99	254
250	3	25.000	600	67	3000	2400	230	450	1091	548	52	158
	4	25.000	600	67	3000	2400	260	600	1492	663	71	254
	5	26.000	750	81	3000	2250	260	600	1950	697	105	254
	6	26.000	850	81	3000	2150	260	700	2396	736	124	275
500	3	26.000	750	81	3500	2750	260	600	2067	996	68	273
	4	26.000	750	81	3500	2750	260	600	2800	1018	90	273
	5	27.000	850	104	3500	2650	260	600	3660	1208	154	399
	6	27.000	1000	104	3500	2500	315	700	4476	1236	182	399
1000	3	27.000	750	104	3500	2750	315	700	4054	1802	103	399
	4	27.000	850	104	3500	2650	315	700	5472	1835	136	399
	5	27.000	1000	104	3500	2500	315	700	6910	1863	164	399
	6	27.000	1000	104	3500	2500	315	850	8360	1936	187	449

* These dimensions may vary if the height of the jib crane (H) is increased or decreased



www.niko.co.uk

Niko Lts are a subsidiary of Helm Hellas S.A.
Company reg: 3826838
VAT reg: 738 8564 80



OVER-BRACED PROFILE JIB CRANES

DIMENSIONS

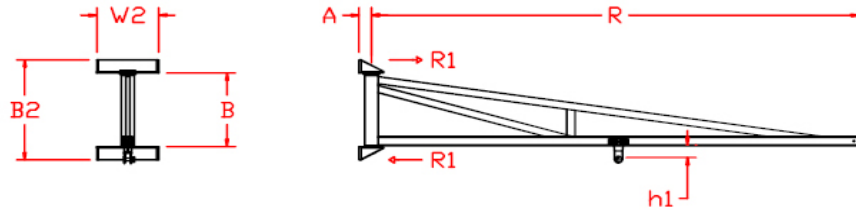
T. +44 (0) 1926 813111

F. +44 (0) 1926 81559

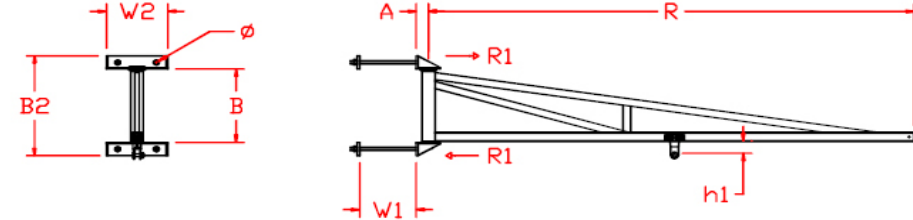
E. sales@niko.co.uk

W. www.niko.co.uk

WALL/FACE MOUNTING BRACKETS



CLAMP AROUND COLUMN MOUNTING BRACKETS



BOTH CLAMP AROUND COLUMN AND WALL/FACE MOUNTING BRACKETS ARE SUPPLIED UNDRILLED TO BE DRILLED/WELDED ON SITE TO SUIT THE APPLICATION.

SWL (kg)	Arm Dimensions				Wall/Face Mounting & Clamp Around Column Bracket Dimensions					Loadings and Weights	
	Radius R (mm)	Niko Track Profile	Kingpin Height B (mm)	Trolley Depth h1 (mm)	Overall Height B2 (mm)	Bracket Width W2 (mm)	Max. Column Width W1 (mm)	Pivot Point A (mm)	Bolt Size ϕ	Reaction R1 (kg)	Arm Weight (kg)
80	3	24.000	500	57	680	380	500	75	M20	1001	42
	4	24.000	500	57	680	380	500	75	M20	1466	58
	5	24.000	600	57	780	380	500	75	M20	1637	71
	6	25.000	600	67	780	380	500	75	M20	2202	95
125	3	25.000	500	67	680	380	500	75	M20	1384	49
	4	25.000	500	67	680	380	500	75	M20	1929	60
	5	25.000	600	67	780	380	500	75	M20	2230	86
	6	25.000	750	67	930	380	500	75	M20	2239	99
250	3	25.000	600	67	780	380	500	75	M20	1950	52
	4	25.000	600	67	780	380	500	75	M20	2724	71
	5	26.000	750	81	930	380	500	75	M20	2951	105
	6	26.000	850	81	1030	380	500	75	M20	3256	124
500	3	26.000	750	81	930	380	500	75	M20	2893	68
	4	26.000	750	81	930	380	500	75	M20	3974	90
	5	27.000	850	104	1050	380	500	105	M20	4759	154
	6	27.000	1000	104	1200	380	500	105	M20	5023	182
1000	3	27.000	750	104	950	380	500	105	M20	5611	103
	4	27.000	850	104	1050	380	500	105	M20	6757	136
	5	27.000	1000	104	1200	380	500	105	M20	7320	164
	6	27.000	1000	104	1200	380	500	105	M20	8920	187



www.niko.co.uk

Niko Lts are a subsidiary of Helm Hellas S.A.

Company reg: 3826838

VAT reg: 738 8564 80



UNDER-BRACED I-BEAM JIB CRANES

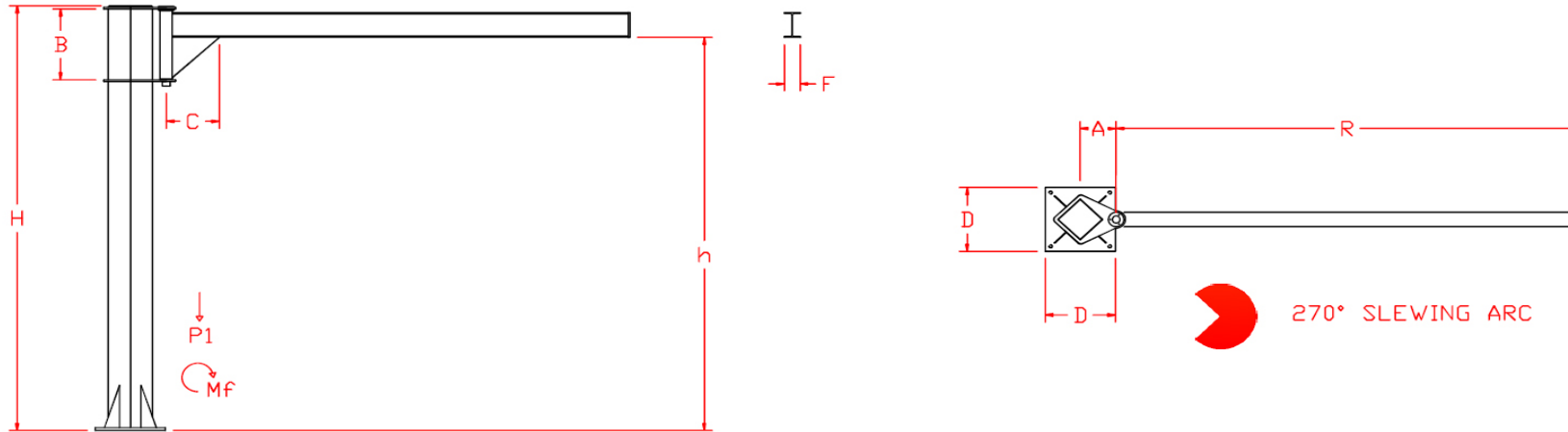
FREESTANDING DIMENSIONS

T. +44 (0) 1926 813111

F. +44 (0) 1926 81559

E. sales@niko.co.uk

W. www.niko.co.uk



SWL (kg)	Arm Dimensions				Freestanding Pillar Dimensions				Loadings and Weights			
	Radius R (mm)	Flange Width F (mm)	Kingpin Height B (mm)	Under-bracing Length C (mm)	Overall Height H (mm)	Height to Under Arm h (mm)	Pivot Point A (mm) *	Base Size D (mm) *	Overturning Moment Mf (kg.m) *	Downward Force P1 (kg) *	Arm Weight (kg)	Column weight (kg)
80	3	102	500	320	3000	2765	230	450x450	544	380	82	158
	4	102	500	320	3000	2765	230	450x450	763	399	101	158
	5	102	600	400	3000	2740	230	450x450	1067	445	147	158
	6	133	600	400	3000	2735	260	600x600	1407	583	189	254
125	3	102	500	320	3000	2765	230	450x450	712	437	82	158
	4	133	500	400	3000	2735	230	450x450	1063	493	139	158
	5	133	600	500	3000	2735	260	600x600	1415	624	174	254
	6	102	750	500	3000	2685	260	600x600	1778	650	200	254
250	3	102	600	400	3000	2740	230	600x600	1209	611	101	158
	4	133	600	400	3000	2685	260	600x600	1667	735	129	254
	5	102	750	500	3000	2680	260	700x700	2238	797	190	254
	6	102	850	550	3000	2630	260	700x700	2878	882	254	275
500	3	102	750	500	3000	2685	260	450x450	2184	1040	116	254
	4	102	750	500	3000	2630	260	600x600	3007	1087	163	254
	5	127	850	500	3000	2590	315	600x600	3901	1264	220	374
	6	140	1000	600	3000	2545	315	700x700	4938	1350	306	374
1000	3	102	750	450	3000	2630	315	700x700	4151	1826	137	374
	4	127	850	500	3000	2590	315	700x700	5692	1905	216	374
	5	140	1000	600	3000	2540	385	850x850	7330	2084	302	467
	6	178	1000	600	3000	2535	385	850x850	9186	2214	432	467

* These dimensions may vary if the height of the jib crane (H) is increased or decreased



www.niko.co.uk

Niko Lts are a subsidiary of Helm Hellas S.A.
Company reg: 3826838
VAT reg: 738 8564 80



UNDER-BRACED I-BEAM JIB CRANES

DIMENSIONS

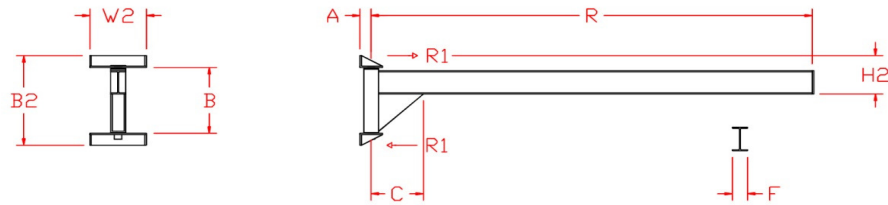
T. +44 (0) 1926 813111

F. +44 (0) 1926 81559

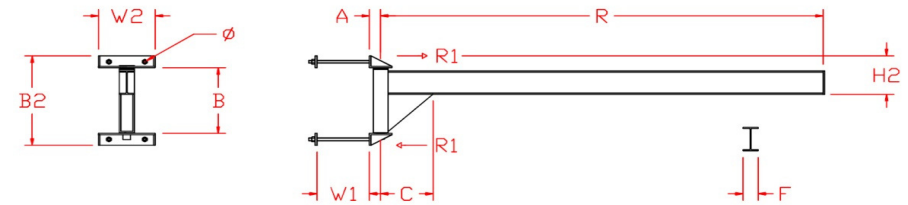
E. sales@niko.co.uk

W. www.niko.co.uk

WALL/FACE MOUNTING BRACKETS



CLAMP AROUND COLUMN MOUNTING BRACKETS



BOTH CLAMP AROUND COLUMN AND WALL/FACE MOUNTING BRACKETS ARE SUPPLIED UNDRILLED TO BE DRILLED/WELDED ON SITE TO SUIT THE APPLICATION.

SWL (kg)	Arm Dimensions				Wall/Face Mounting & Clamp Around Column Bracket Dimensions						Loadings and Weights	
	Radius R (mm)	Flange Width F (mm)	Kingpin Height B (mm)	Under-bracing Length C (mm)	Overall Height B2 (mm)	Headroom Height H2 (mm)	Bracket Width W2 (mm)	Max. Column Width W1 (mm)	Pivot Point A (mm)	Bolt Size ϕ	Reaction R1 (kg)	Arm Weight (kg)
80	3	102	500	320	680	305	380	500	75	M20	1335	82
	4	102	500	320	680	305	380	500	75	M20	1932	101
	5	102	600	400	780	330	380	500	75	M20	2390	147
	6	133	600	400	780	330	380	500	105	M20	3291	189
125	3	102	500	320	680	305	380	500	75	M20	1672	82
	4	133	500	400	680	330	380	500	105	M20	2683	139
	5	133	600	500	780	330	380	500	105	M20	3083	174
	6	102	750	500	930	385	380	500	105	M20	3170	200
250	3	102	600	400	780	330	380	500	75	M20	2266	101
	4	133	600	400	780	380	380	500	105	M20	3207	129
	5	102	750	500	930	390	380	500	105	M20	3617	190
	6	102	850	550	1,030	440	380	500	105	M20	4284	254
500	3	102	750	500	930	380	380	500	105	M20	3144	116
	4	102	750	500	930	435	380	500	105	M20	4445	163
	5	127	850	500	1,050	485	380	500	105	M20	5238	220
	6	140	1000	600	1,200	835	380	500	105	M20	5855	306
1000	3	102	750	450	950	445	380	500	105	M20	5810	137
	4	127	850	500	1,050	490	380	500	105	M20	7204	216
	5	140	1000	600	1,200	540	380	500	105	M20	8085	302
	6	178	1000	600	1,200	545	380	500	105	M20	10482	432



www.niko.co.uk

Niko Lts are a subsidiary of Helm Hellas S.A.

Company reg: 3826838

VAT reg: 738 8564 80



OVER-BRACED I-BEAM JIB CRANES

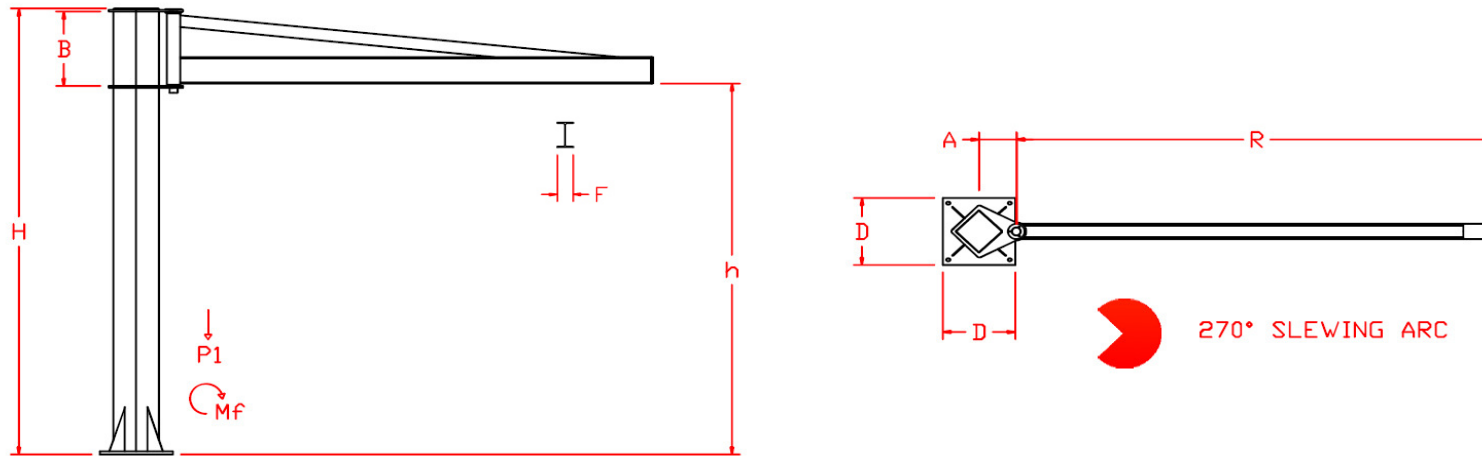
FREESTANDING DIMENSIONS

T. +44 (0) 1926 813111

F. +44 (0) 1926 81559

E. sales@niko.co.uk

W. www.niko.co.uk



SWL (kg)	Arm Dimensions			Freestanding Pillar Dimensions				Loadings and Weights			
	Radius R (mm)	Flange Width F (mm)	Kingpin Height B (mm)	Overall Height H (mm)	Height to Under Arm h (mm)	Pivot Point A (mm) *	Base Size D (mm) *	Overturning Moment Mf (kg.m) *	Downward Force P1 (kg) *	Arm Weight (kg)	Column weight (kg)
80	3	102	500	3000	2500	230	450x450	505	355	57	158
	4	102	500	3000	2500	230	450x450	702	369	71	158
	5	102	600	3000	2400	230	450x450	975	408	110	158
	6	102	600	3000	2400	230	600x600	1259	464	140	184
125	3	102	500	3000	2500	230	450x450	515	417	63	158
	4	102	500	3000	2500	230	450x450	718	433	79	158
	5	102	600	3000	2400	230	600x600	1000	500	120	184
	6	102	750	3000	2250	260	600x600	1259	590	140	254
250	3	102	600	3000	2400	230	450x450	520	577	66	158
	4	102	600	3000	2400	260	600x600	725	689	83	254
	5	102	750	3000	2250	260	600x600	1043	744	137	254
	6	102	850	3000	2150	260	700x700	1332	791	164	275
500	3	102	750	3500	2750	260	600x600	556	1024	81	273
	4	102	750	3500	2750	315	700x700	780	1169	100	399
	5	102	850	3500	2650	315	700x700	1174	1248	179	399
	6	102	1000	3500	2500	315	700x700	1525	1287	218	399
1000	3	102	750	3500	2750	315	700x700	661	1824	110	399
	4	102	850	3500	2650	315	700x700	942	1855	141	399
	5	102	1000	3500	2500	315	700x700	1306	1907	193	399
	6	102	1000	3500	2500	315	850x850	1659	1987	223	449

* These dimensions may vary if the height of the jib crane (H) is increased or decreasec



www.niko.co.uk

Niko Lts are a subsidiary of Helm Hellas S.A.

Company reg: 3826838

VAT reg: 738 8564 80



OVER-BRACED I-BEAM JIB CRANES

DIMENSIONS

T. +44 (0) 1926 813111

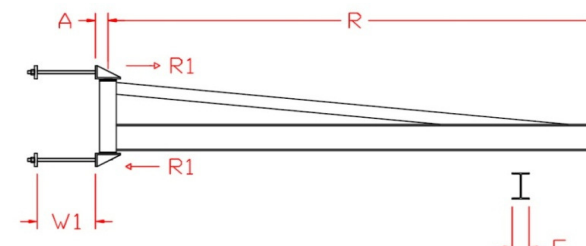
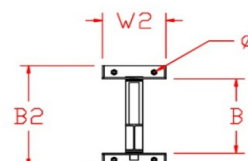
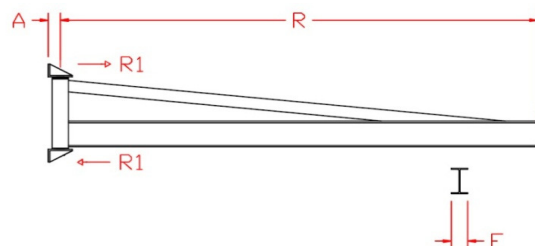
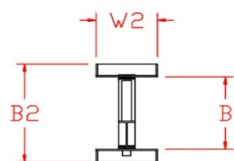
F. +44 (0) 1926 81559

E. sales@niko.co.uk

W. www.niko.co.uk

WALL/FACE MOUNTING BRACKETS

CLAMP AROUND COLUMN MOUNTING BRACKETS



BOTH CLAMP AROUND COLUMN AND WALL/FACE MOUNTING BRACKETS ARE SUPPLIED UNDRILLED TO BE DRILLED/WELDED ON SITE TO SUIT THE APPLICATION.

SWL (kg)	Arm Dimensions			Wall/Face Mounting & Clamp Around Column Bracket Dimensions					Loadings and Weights	
	Radius R (mm)	Flange Width F (mm)	Kingpin Height B (mm)	Overall Height B2 (mm)	Bracket Width W (mm)	Max. Column Width W1 (mm)	Pivot Point A (mm)	Bolt Size Ø	Reaction R1 (kg)	Arm Weight (kg)
80	3	102	500	680	380	500	75	M20	1022	57
	4	102	500	680	380	500	75	M20	1448	71
	5	102	600	780	380	500	75	M20	1817	110
	6	102	600	780	380	500	75	M20	2464	140
125	3	102	500	680	380	500	75	M20	1396	63
	4	102	500	680	380	500	75	M20	1963	79
	5	102	600	780	380	500	75	M20	2370	120
	6	102	750	930	380	500	75	M20	2421	140
250	3	102	600	780	380	500	75	M20	1962	66
	4	102	600	780	380	500	75	M20	2700	83
	5	102	750	930	380	500	75	M20	3050	137
	6	102	850	1030	380	500	75	M20	3410	164
500	3	102	750	930	380	500	75	M20	2882	81
	4	102	750	930	380	500	75	M20	3925	100
	5	102	850	1050	380	500	105	M20	4785	179
	6	102	1000	1200	380	500	105	M20	5105	218
1000	3	102	750	950	380	500	105	M20	5528	110
	4	102	850	1050	380	500	105	M20	6622	141
	5	102	1000	1200	380	500	105	M20	7278	193
	6	102	1000	1200	380	500	105	M20	8902	223



www.niko.co.uk

Niko Lts are a subsidiary of Helm Hellas S.A.

Company reg: 3826838

VAT reg: 738 8564 80



BASE PLATE DIMENSIONS

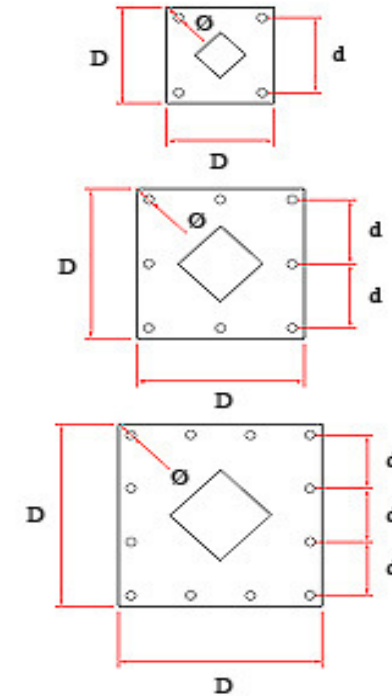
T. +44 (0) 1926 813111

F. +44 (0) 1926 81559

E. sales@niko.co.uk

W. www.niko.co.uk

	J-BASE450	J-BASE600	J-BASE700	J-BASE850
D (mm)	450	600	700	850
d (mm)	380	255	300	250
No. Holes	4	8	8	12
Hole Ø (mm)	22	25	25	30
Min Thickness of Floor (mm)	130	135	165	160
Max Distance from Edge of Concrete (mm)	100	150	150	150
Grade of Concrete	C30/37	C30/37	C30/37	C30/37
Bolt Size	M16	M20	M20	M24
Diameter of Hole in Floor (mm)	18	24	24	28
Depth of Hole in Floor (mm)	80	90	90	100
Recommended Anchor Type	HILTI-HY 200-A +HIT-V (8.8)	HILTI-HY 200-A +HIT-V (8.8)	HILTI-HY 200-A +HIT-V (8.8)	HILTI-HY 200-A +HIT-V (8.8)



These dimensions are recommended minimums for all Niko Jibs. Alternative dimensions for non standard floors are available upon request.



www.niko.co.uk

Niko Lts are a subsidiary of Helm Hellas S.A.

Company reg: 3826838

VAT reg: 738 8564 80